



INGREBOURNE
COUNTRY CLUB

‘Ben on the Course’



**Welcome to my
Autumn/Winter 2025 Update**

Ben Adams - Course Manager



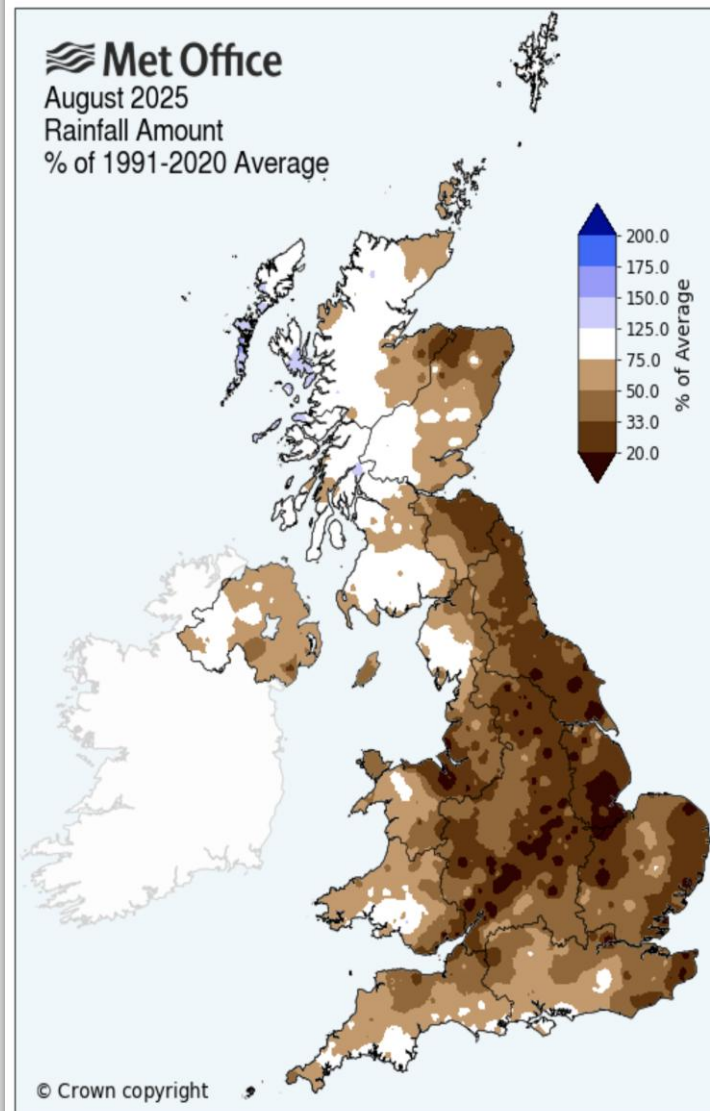
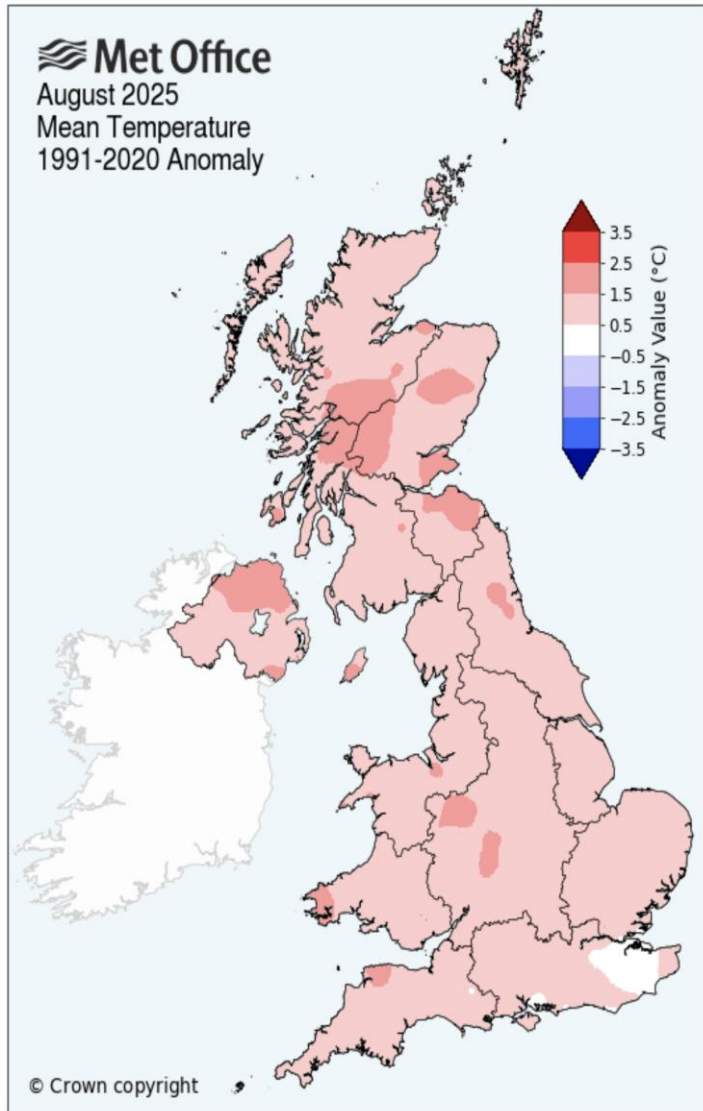
‘Ben on the Course’

It's that time of year again when the clocks go back and the days get shorter and we begin the winter stretch until spring next year.

We have had an incredible summer with lots of golf being played at Ingrebourne Links.

Our course continues to get high ratings together with good feedback from many players.

We are now preparing the course for the coming months and will do all we can to offer the best playing conditions – especially with your help.



Following on from **the driest Spring for the past 69 years**, we have also had an incredibly dry and warm summer.

Met Office graphs show the average mean temperatures increased across the entire country and rainfall was markedly lower. **Fortunately for us we have a fully irrigated golf course – however, managing dry weather is still a big challenge for us.**



Our irrigation lake tells the story of our water consumption this year. **There are 110 million liters** (equivalent to 44 Olympic size swimming pools) in our lake.

During the summer height, we were using one million liters of water per night to irrigate the golf course.

We now need the winter rains to replenish our lake ready for the summer of 2026.

Water is one of our most valuable commodities.



‘Ben on the Course’



This year was a busy year for the Club, on the Regional and National tournament front with the highlight being the **PGA Club Professionals Championship** played in June.

This flagship event of the PGA saw a field of 144 top PGA professionals from around the UK competing over 72 holes, for a prize fund of £100k.

The 72-hole event was won by Harry Casey from The Shire Club in Hertfordshire with four scores of **69,68,70,68** for a **-13 under total – now that really is good golf!**

Fact: Harry had only four bogeys in the entire 72 holes, with 17 birdies and the rest pars – tremendous golf!




‘Ben on the Course’



INGREBOURNE
COUNTRY CLUB



In addition, we hosted the **PGA 36-hole East Anglian Open** for a third consecutive year. **Glen Portelli and Harry Casey** tied with scores of **-6** with Glen winning the playoff.



The **Essex Golf Unions** Centenary Cup was played in August with Orsett's **William Horne** scoring a commendable **-14** for the 54-hole event (not played from all back tees)

Finally, for the second year running the National **PGA Intercounty Championships** were held in October with **Guy Woodman and Adam Wotton**, representing Berks, Bucks and Oxfordshire.

‘Ben on the Course’

*“Woodman praised the **course setup** and highlighted the shift in mindset between the two formats:*

“Ingrebourne is a great course for both. On day one, it’s almost ignorance because you just get a driver out and bomb it. We played well doing that”

**PGA Inter County
Champion winners
pictured with PGA
Captain, David Scott**





The Professional Golfers' Association

The Course Statistics are interesting for the PGA Championships.

Only 4 holes played under par, which were all our Par 5 hole (3rd, 9th, 15th and 18th).

Every other hole played above par!

Ingrebourne Links continues to challenge the very best players!

HOLE ▽	PAR	STROKE INDEX	YARDS	EAGLES	BIRDIES	PARS	BOGEYS	D BOGEYS	OTHER	AVG	TO PAR
1	4	5	413	0	20	260	91	15	1	4.26	0.26
2	4	9	408	0	41	260	73	12	1	4.15	0.15
3	5	13	503	13	140	184	40	7	3	4.73	-0.27
4	4	3	428	0	19	209	124	27	8	4.48	0.48
5	4	1	459	0	28	211	113	23	12	4.44	0.44
6	4	11	411	0	33	242	87	20	4	4.27	0.27
7	4	7	409	0	41	232	94	17	2	4.24	0.24
8	3	17	168	0	58	265	59	4	0	3.02	0.02
9	5	15	502	9	162	159	39	15	2	4.72	-0.28
10	4	16	378	0	49	267	51	16	3	4.12	0.12
11	3	10	186	0	32	263	89	2	0	3.15	0.15
12	4	4	454	0	24	223	108	27	4	4.38	0.38
13	4	6	413	0	31	236	79	25	15	4.39	0.39
14	3	12	192	0	22	231	117	9	7	3.36	0.36
15	5	2	634	0	110	243	29	3	1	4.81	-0.19
16	4	8	443	1	38	261	70	16	0	4.16	0.16
17	3	18	140	0	30	265	82	9	0	3.18	0.18
18	5	14	581	7	127	200	43	5	4	4.80	-0.20
Totals	72		7122	30	1005	4211	1388	252	67	74.66	2.66



The Professional Golfers' Association

The Course Stats are compelling for the PGA Championships.

Average Scores :

Rd 1 = 74.86

Rd 2 = 75.73

Rd 3 = 73.28

Rd 4 = 72.42

4 Rd Ave = 74.66

INGREBOURNE LINKS- NORTH/	EAGLES	BIRDIES	PARS	BOGEYS	D BOGEYS	AVG SCORE
Round 1	8	324	1604	521	79	74.86
Round 2	12	367	1458	561	123	75.73
Round 3	4	164	546	171	30	73.28
Round 4	6	150	603	135	20	72.42
OVERALL	30	1005	4211	1388	252	74.66





‘Ben on the Course’



The preparation for these big events is a challenge that both my team and I thoroughly enjoy – it's long hours, hard work and there are a lot of things that can go wrong, **but** we enjoy the challenge!

I'd like to say a big 'thank you' to all the Ingrebourne Links staff, our members and volunteers who worked tirelessly to make all these big events successful.

I'd also like to thank the competitors for all the positive comments received about our golf course and its top-class presentation – it makes all the hard work very worthwhile.

‘Ben on the Course’

Our **early autumn light renovations** on the greens went to plan and together with regular topdressing the surfaces are putting well.

At this time of year **all** golf greens are under the threat from fusarium patch.

This airborne disease attacks fine grasses especially in damp, humid and cloudy conditions. Fortunately, we sprayed our fungicides well in advance and our damage is minimal in comparison to other courses.

‘Ben on the Course’

Overall, the sward density of our greens (and fairways, tees and approaches) is excellent.

We have worked hard on all grass surfaces throughout the year, and our coverage is excellent going into November.

The image to the left is our 5th green, and virtually all greens are showing this dense grass cover.





INGREBOURNE
COUNTRY CLUB

‘Ben on the Course’

We will continue to micro tine and light top dress our greens when conditions allow.

This proven practice will be ongoing and is one of the main reasons why we can play our greens all year round.

We will spike our fairways as well when they soften up more, as at present the soil structure beneath the fairways is still very firm and impenetrable.

Our tining and spiking program is one of the main reasons we have great playing surfaces throughout the entire year. When the weather allows, we will continue!



‘Ben on the Course’

The spiking effect can be seen on the image to the left. As the tine enters the ground and then retracts, the tine ‘heaves’ the lower soil structure as it leaves the surface. This really breaks up both the sub and topsoils allowing both moisture and air to get deep into the profile.

Again, we aim to play through the winter season without temporary greens and, where possible, without temporary tees. Very few golf clubs can provide these conditions throughout the year.



‘Ben on the Course’

Our new paths worked well last Autumn and Spring, and once again, members and visitors will be guided towards them, with other routes being roped off.

Your co-operation is greatly appreciated, and we will see huge dividends early Spring 2026.



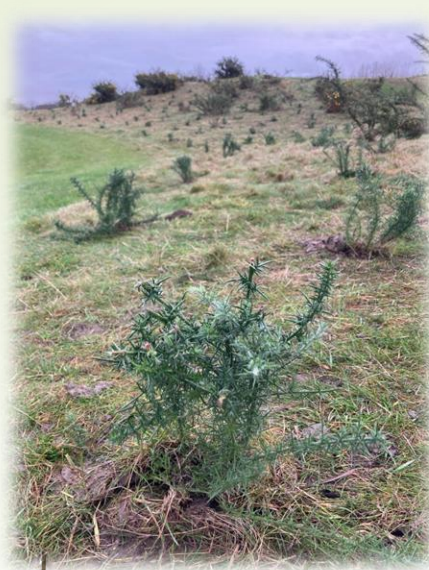
INGREBOURNE
COUNTRY CLUB

‘Ben on the Course’

The extremely hot summer weather left our new **gorse plantings** looking somewhat parched, but I'm pleased to see that with the recent cooler temperatures and rain, that they have come back and are thriving.

Certain bushes have had a growth spurt and will hopefully flower next year.

Gorse is such a hardy plant and seems to like the land at Ingrebourne Links. In another couple of seasons, the closing stretch of holes will be much more challenging!



‘Ben on the Course’



INGREBOURNE
COUNTRY CLUB

Our winter jobs are numerous and are weather dependent. This summer we removed the wooden bunker ties on the 4th, 6th and 7th holes. The sand lines were brought up and are much more prominent as you play the holes.

This winter we will continue this work on the 9th and 13th holes.

To the left is the current 13th fairway bunker and our image of what we want to achieve when it's finished! Far more visible from the tee shot adding further angst to what is already the toughest tee shot on the course (from the back tees).





‘Ben on the Course’



INGREBOURNE
COUNTRY CLUB

You may have noticed that we have been sanding paths and ‘walk off and on areas’ with quite a coarse sand.

We want to firm these areas up for the coming winter months. The sand will work its way down into the soil profile and will consolidate the areas better.

We will be repeating this process throughout the season which we hope will assist the heavy traffic areas.

‘Ben on the Course’



INGREBOURNE
COUNTRY CLUB

Course presentation is what my greenkeeping team and I strive for 365 days of the year.

Even now as we enter November the course conditions are as good as I have seen them. The definition we can achieve allows us to present the course very well.

From greens cut to collars, approach cut to fairway cut and from semi rough to main rough cut we want to achieve perfection. Its not always possible but we continue to aim high.

Our moto is ‘*what can we do to improve on last year ?*’



‘Ben on the Course’

I think you all know this part of the ‘Ben on the Course’ update and that is me **asking you to repair your pitch marks, replace your divots, stick to the paths and respect the roped off areas.**

Our brilliant course marshals have once again done an exceptional job. They care about the course, as I am sure all members and visitors do – even though some may forget now and again!

A BIG thank you to our Marshalls – Not many clubs I know benefit from such a dedicated team!

Our course has had its busiest year and has stood up to the challenge, and even now, nearly November, it looks in great shape. Please help me and my team by doing your bit on the course.





‘Ben on the Course’



INGREBOURNE
COUNTRY CLUB

Thank you for taking the time to read my Autumn/Winter 25/26 'Ben on the Course' communication - It is much appreciated.

As always, a big thank you to **my greenkeeping team** who work in all weathers to keep the course in pristine condition – give them a wave and give them a pat on the back as it makes them feel its all worthwhile.

Winter is close by....we are still using buggies and trollies but as the course conditions change so will these benefits. Have you ever thought of carrying a small bag with say 9 or 10 clubs? If you can, I will be saying a big thank you to YOU!!

RESPECT
IN GOLF